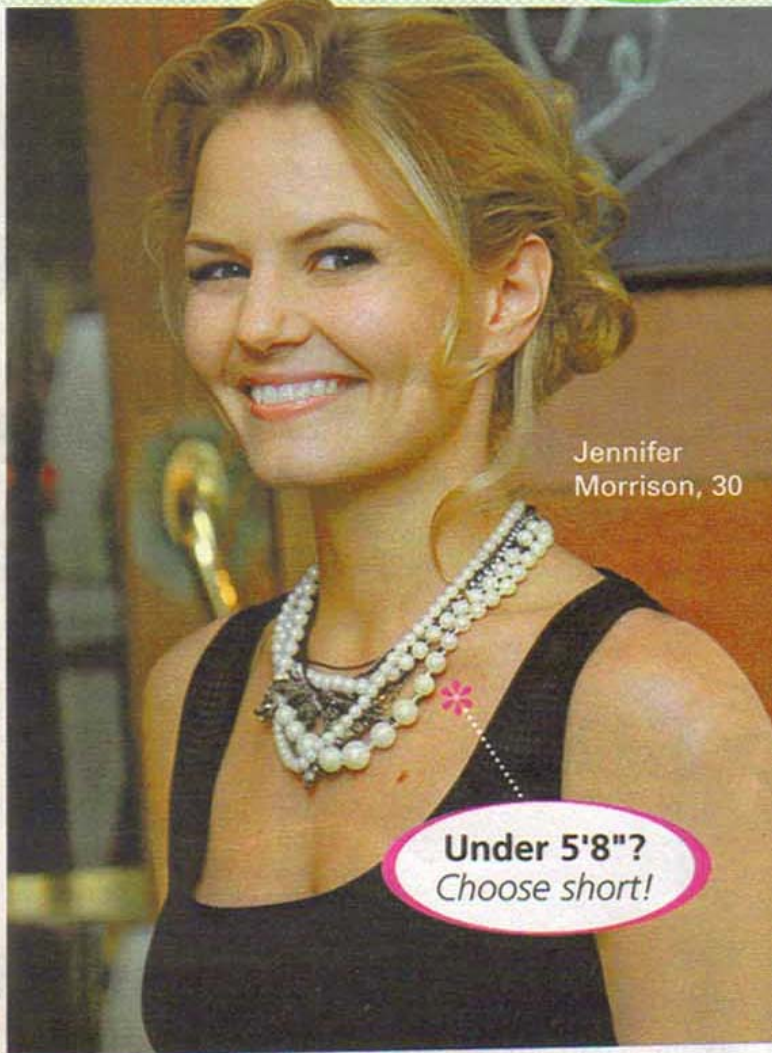


Sandra Bullock, 45

5'8" or taller?
Choose long!



Jennifer Morrison, 30

Under 5'8"?
Choose short!

Twist up happy!

Why Hollywood darlings are all about layered necklaces: There's no simpler way to make any outfit classy chic. But it's not just how you'll turn heads that renders this look so smile-worthy: "When you mix glossy pearls with shiny metals, your teeth look whiter and your eyes sparkle," says celebrity stylist George Blodwell. For shorter women, neck-hugging strands draw focus to the face and don't overpower a petite frame. Taller gals can go for longer chains that fall to the chest, which cause the eye to scan vertically for a slimming effect.

TO GET THE LOOK: Twist gold and/or silver metal chains around the neck, then top with pearls. "It's about the mix 'n' match," Blodwell encourages.

Quick picks

* LONG * LONG *



Givenchy Pearls, \$62; call 800-578-4552; Multi Link Necklace, \$28, at Lulus.com; Simply Vera Black Jet Bead Chain, \$36, at Kohls.com.

* SHORT * SHORT *



Mixed Media Gold Link Featuring Pearls and Black Beading, \$9, at Forever21.com.



Mixed Media White Pearl Necklace and Oxidized Oversize Link, \$37, at Shop4Sparkles.com.

From left: Rachel Kelly/Photo Image Press; Alex Bertiner/BEImages; Sillis; HBB; Text: Caitlin Tansey.